



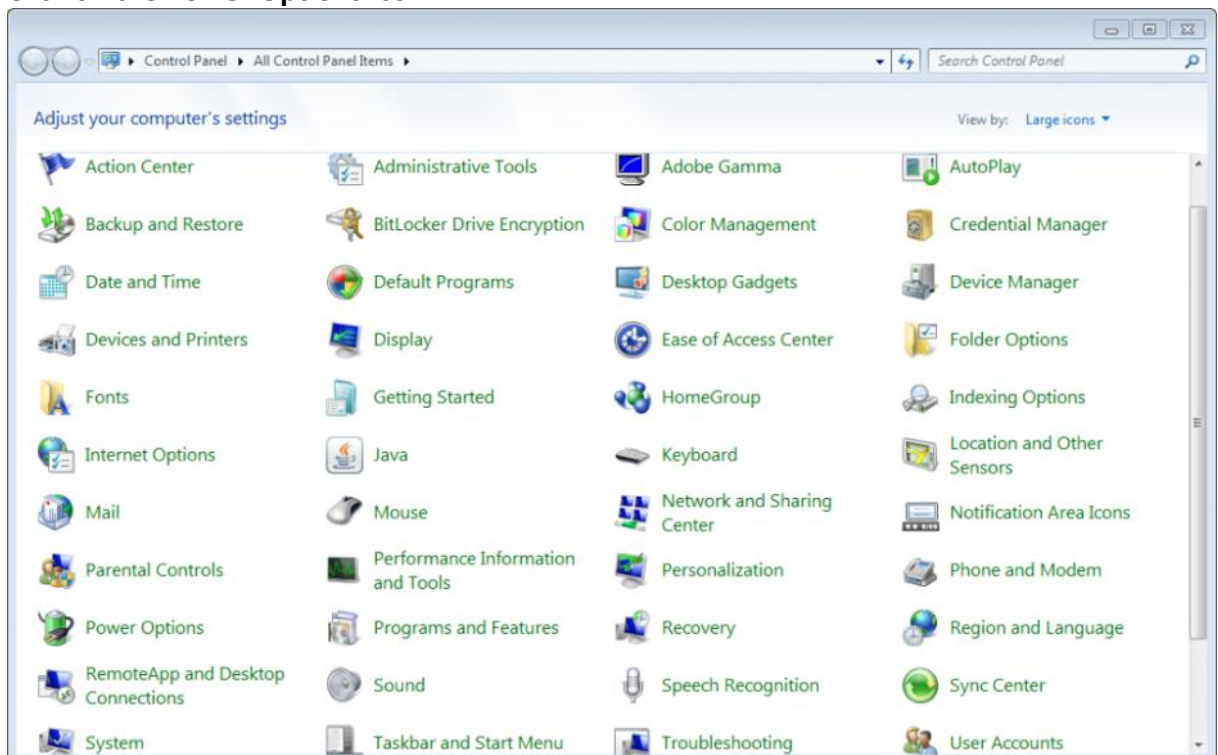
USB Issues

First at all, please install the last packages from our site.
<http://www.revolution-simproducts.com/Downloads.html>

If you meet some troubles, please follow step by step this document:

1 – Check that "allow the computer to turn this device off to save power" feature is off (Vista/Win 7)

- a) Open the **Control Panel** from the Start menu. (Classic View)
- b) Click on the **Power Options** icon.



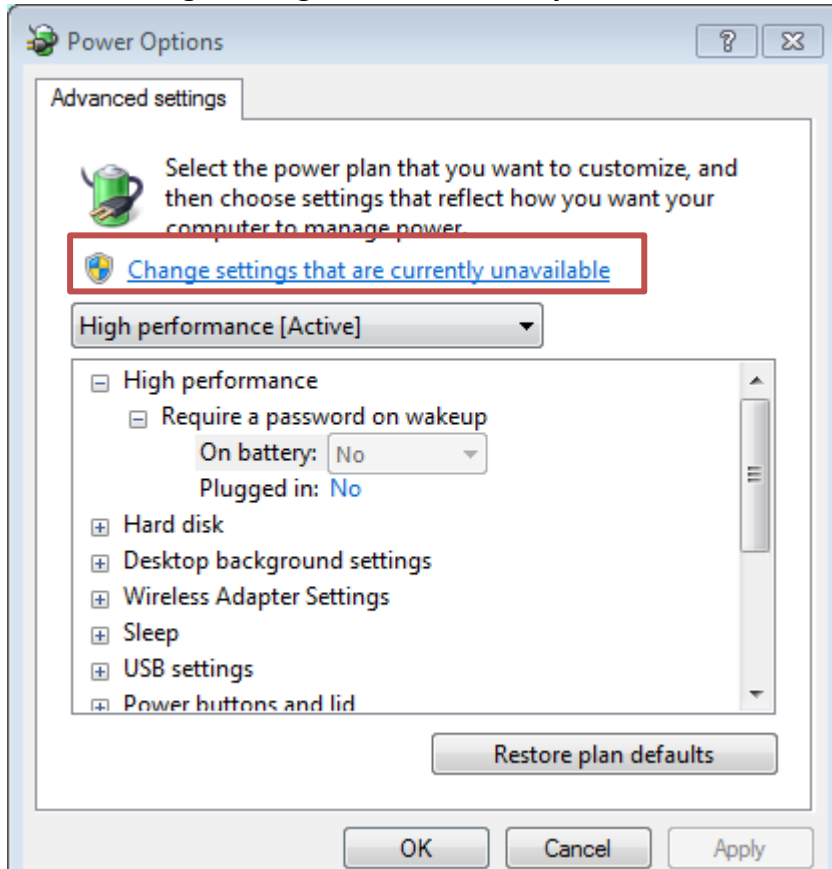
c) Click on the **Change plan settings** link under your selected power plan.



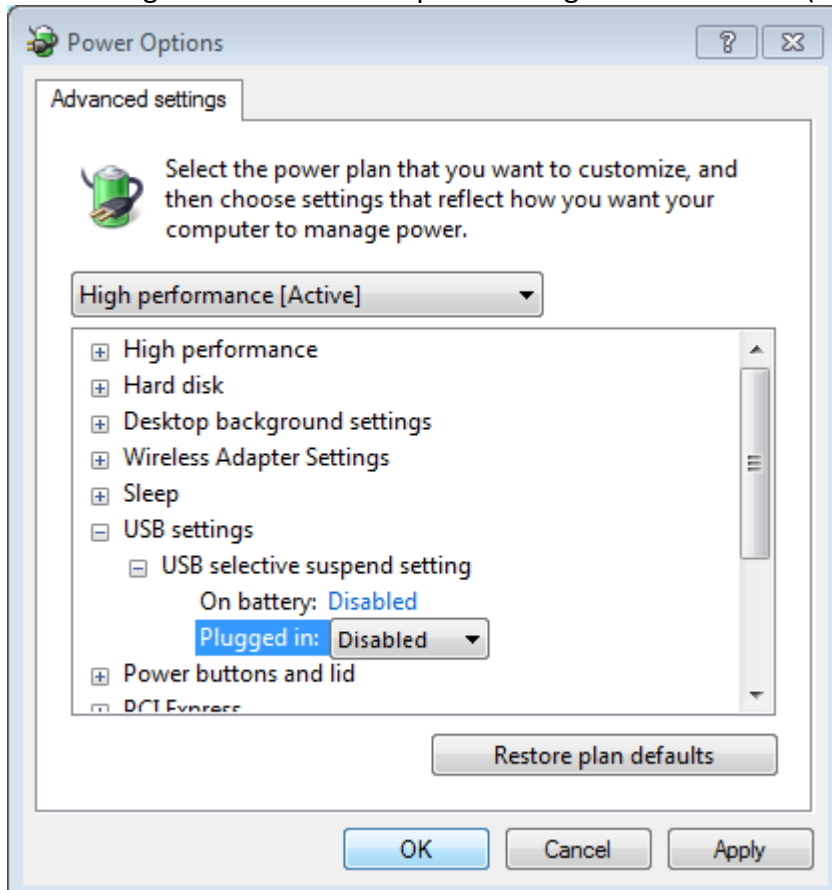
d) Click on **Change advanced power settings**.



e) Click on **Change settings that are currently unavailable**.



f) USB Settings : USB selective suspend setting : Set to Disabled (both)



2 – Try with another USB cable

3 – Your USB concentrator could be failed

Try each plug of your computer (without using USB hub).

4 – Maybe your electrical power is not sufficient.

Remove the other USB devices and use a self-powered USB hub.